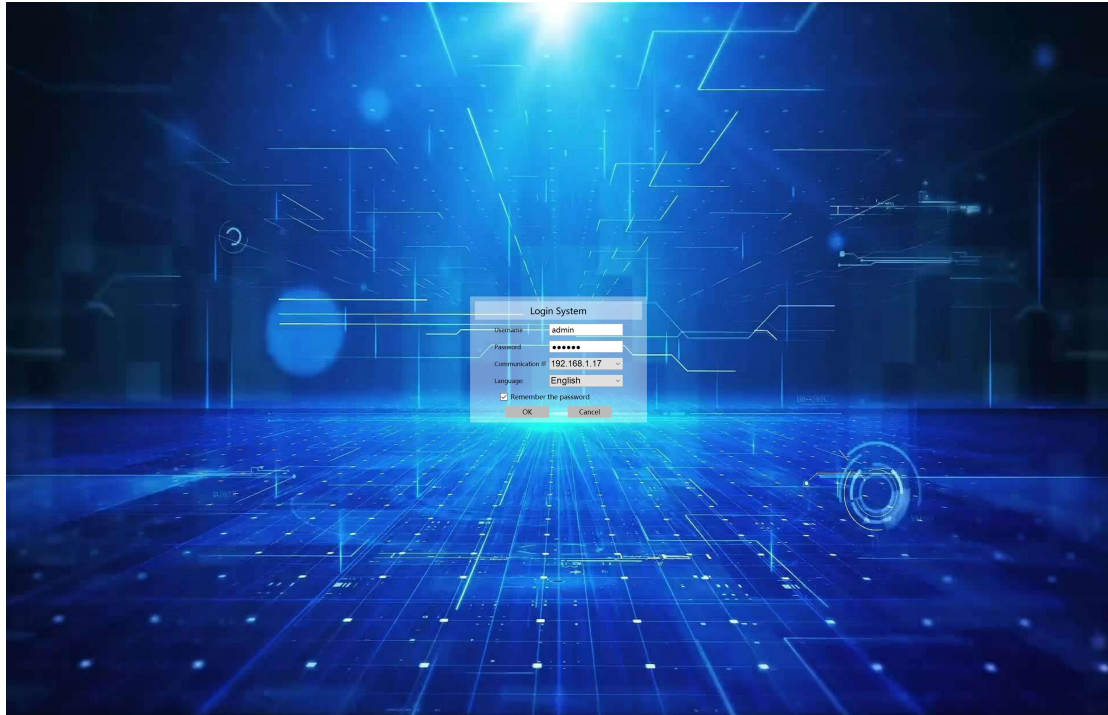


Operation Guide for DVSTool/xview Software

This software is for the Devices settings, control and firmware upgrade.

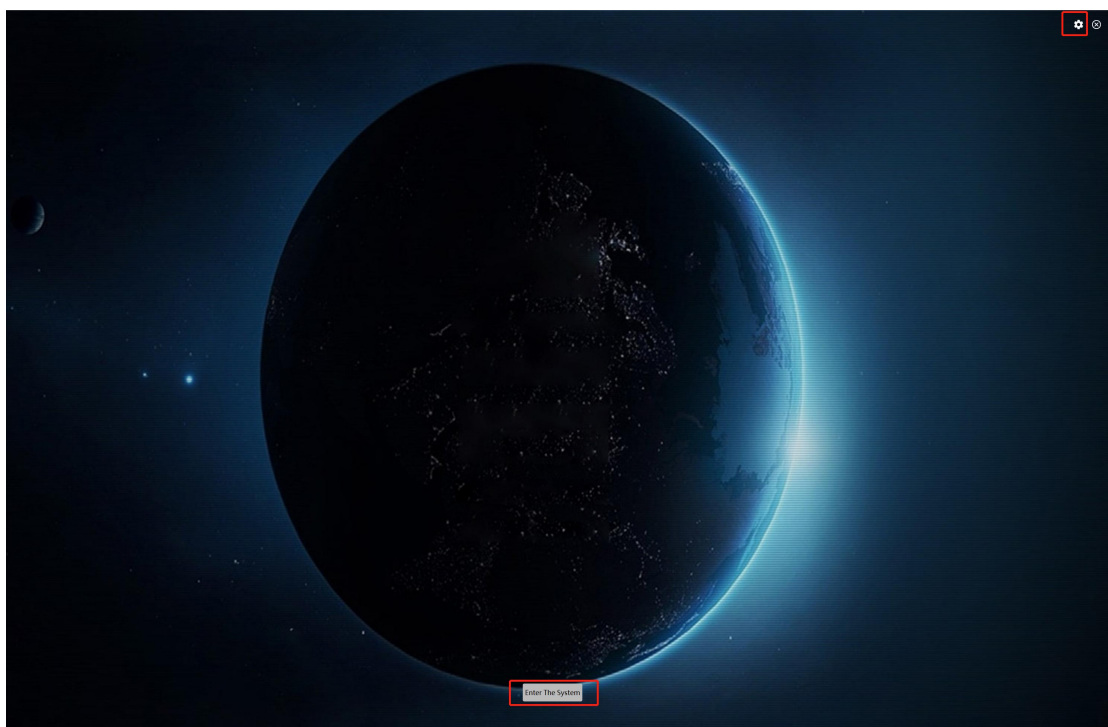
The default user name is admin, password is 123456



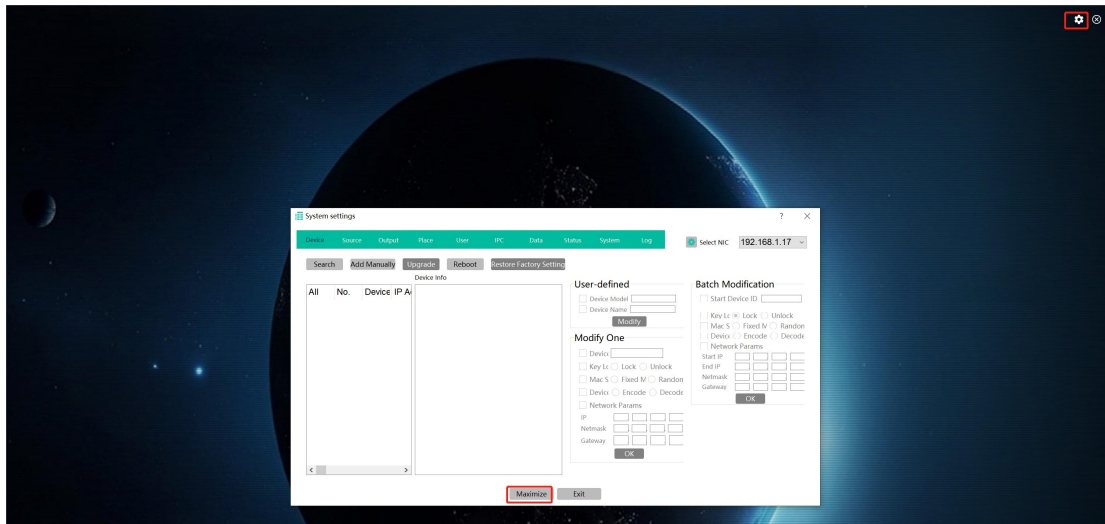
After login will be showing as the below:

Setting icon is for all the settings, IP address changes, firmware etc

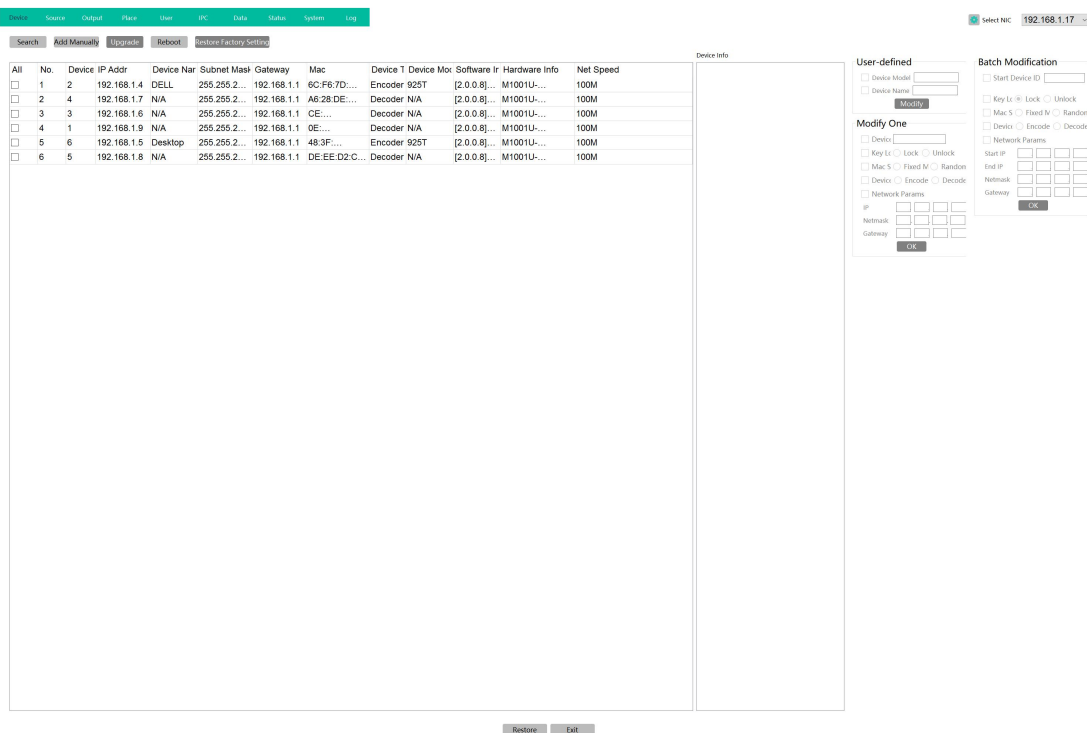
Enter System will be for the Video wall and matrix switch controls



Settings icon: after click it, it will be showing this System setting window, we can click to maximumize it:



Device is for finding all the transmitters and receivers:



From this Devices settings, we can set the device either work as Encoder or decoder, also the IP address settings, also need to have the start ID filled out, can set one by one or use the batch

configuration:

The configuration interface shows a table of devices with the following data:

All	No.	Device	IP Addr	Device Name	Subnet Mask	Gateway	Mac	Device Ty	Device Mode	Software Inf	Hardware Info	Net Speed
<input type="checkbox"/>	1	2	192.168.1.4	DELL	255.255.2...	192.168.1.1	6C-F8-7D...	Encoder 925T	[2.0.0.8]...	M1001U...		100M
<input type="checkbox"/>	5	6	192.168.1.5	Desktop	255.255.2...	192.168.1.1	48-3F...	Encoder 925T	[2.0.0.8]...	M1001U...		100M
<input checked="" type="checkbox"/>	3	3	192.168.1.6	N/A	255.255.2...	192.168.1.1	CE...	Decoder N/A	[2.0.0.8]...	M1001U...		100M
<input checked="" type="checkbox"/>	2	4	192.168.1.7	N/A	255.255.2...	192.168.1.1	A6-28-DE...	Decoder N/A	[2.0.0.8]...	M1001U...		100M
<input checked="" type="checkbox"/>	6	5	192.168.1.8	N/A	255.255.2...	192.168.1.1	DE-EE-D2-C...	Decoder N/A	[2.0.0.8]...	M1001U...		100M
<input checked="" type="checkbox"/>	4	1	192.168.1.9	N/A	255.255.2...	192.168.1.1	OE...	Decoder N/A	[2.0.0.8]...	M1001U...		100M

The configuration panel on the right shows settings for the selected device (192.168.1.17), including Device Basic Information, User-defined settings, Batch Modification, and Modify One options.

Devices upgrading:

The devices upgrading interface shows a table of devices with the following data:

All	No.	Device	IP Addr	Device Name	Subnet Mask	Gateway	Mac	Device Ty	Device Mode	Software Inf	Hardware Info	Net Speed
<input checked="" type="checkbox"/>	1	2	192.168.1.4	DELL	255.255.2...	192.168.1.1	6C-F8-7D...	Encoder 925T	[2.0.0.8]...	M1001U...		100M
<input checked="" type="checkbox"/>	2	1	192.168.1.9	N/A	255.255.2...	192.168.1.1	B8-B4-48-19...	Decoder N/A	[2.0.0.8]...	M1001U...		100M
<input checked="" type="checkbox"/>	3	4	192.168.1.7	N/A	255.255.2...	192.168.1.1	A6-28-DE...	Decoder N/A	[2.0.0.8]...	M1001U...		100M
<input checked="" type="checkbox"/>	4	3	192.168.1.6	N/A	255.255.2...	192.168.1.1	CE...	Decoder N/A	[2.0.0.8]...	M1001U...		100M
<input checked="" type="checkbox"/>	5	6	192.168.1.5	Desktop	255.255.2...	192.168.1.1	48-3F...	Encoder 925T	[2.0.0.8]...	M1001U...		100M
<input checked="" type="checkbox"/>	6	5	192.168.1.8	N/A	255.255.2...	192.168.1.1	DE-EE-D2-C...	Decoder N/A	[2.0.0.8]...	M1001U...		100M

The firmware upgrade progress window shows the following data:

No	IP	Model	Progress	Status
0	192.168...	M10...	13%	
1	192.168...	M10...	14%	
2	192.168...	M10...	14%	
3	192.168...	M10...	14%	
4	192.168...	M10...	13%	
5	192.168...	M10...	14%	

Source tab is for input sources grouping:

The source tab interface shows a table of devices with the following data:

All	No.	ID	IP Addr	Device Name	Input Resolution	Encoding Resolution	HDMI Status
<input type="checkbox"/>	1	2	192.168.1.4	DELL	3840x2160	3840x2160	Connected
<input type="checkbox"/>	2	6	192.168.1.5	Desktop	3840x2160	3840x2160	Connected

The source group list on the right shows the following data:

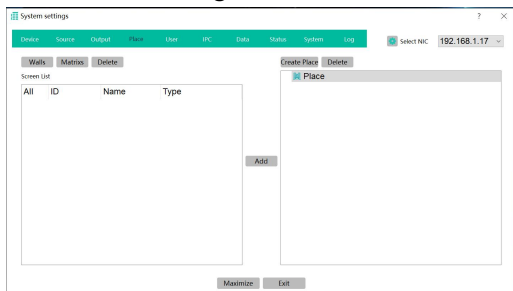
- Source Group: 192.168.1.4
 - DELL
- Source Group: 192.168.1.5
 - Desktop

Output for adding the outputs to list on the right side:

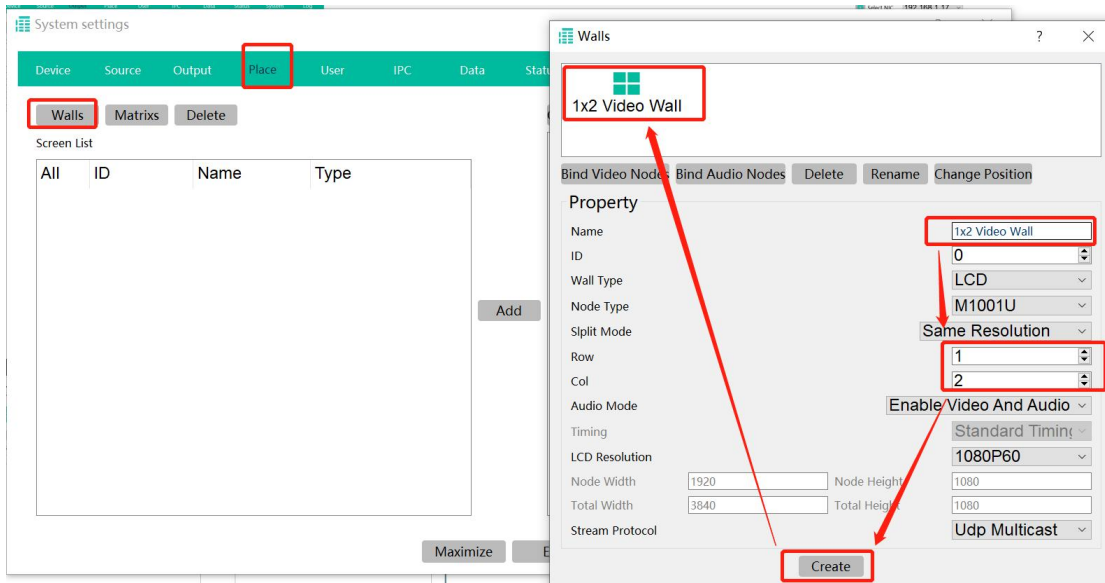
All	No.	ID	IP Addr	Device Name	Output Resolution
<input type="checkbox"/>	1	4	192.168.1.7	N/A	1920x1080
<input type="checkbox"/>	2	3	192.168.1.6	N/A	1920x1080
<input type="checkbox"/>	3	1	192.168.1.9	N/A	3840x2160
<input type="checkbox"/>	4	5	192.168.1.8	N/A	1920x1080

All	No.	ID	IP	Name
<input type="checkbox"/>	1	1	192.168...	192.168.1.9
<input type="checkbox"/>	2	3	192.168...	192.168.1.6
<input type="checkbox"/>	3	4	192.168...	192.168.1.7
<input type="checkbox"/>	4	5	192.168...	192.168.1.8

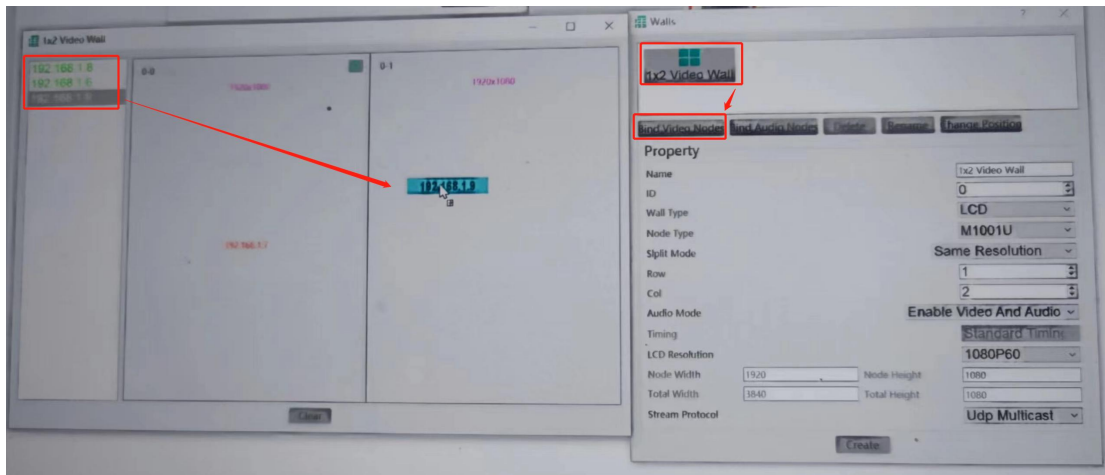
Place is for creating the Video Wall or Matrix Switcher:



Create Video Walls



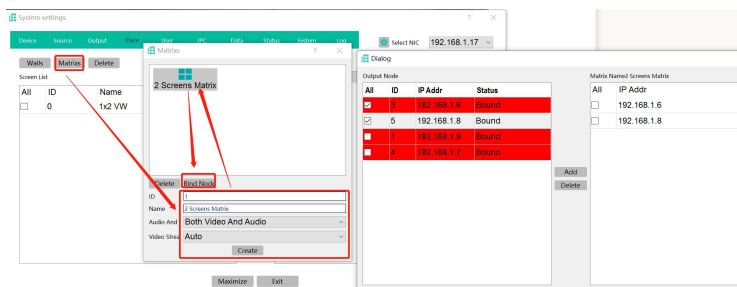
After create the video wall, will need to bind the video nodes:



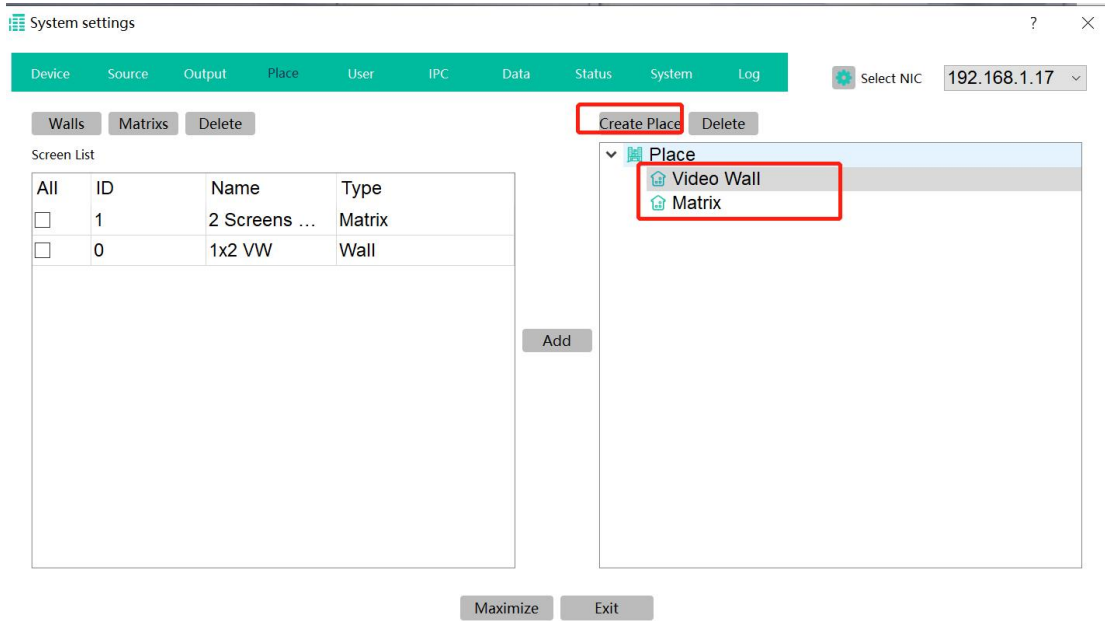
When drag the devices from the left side to the video wall, the display will be lighted up:



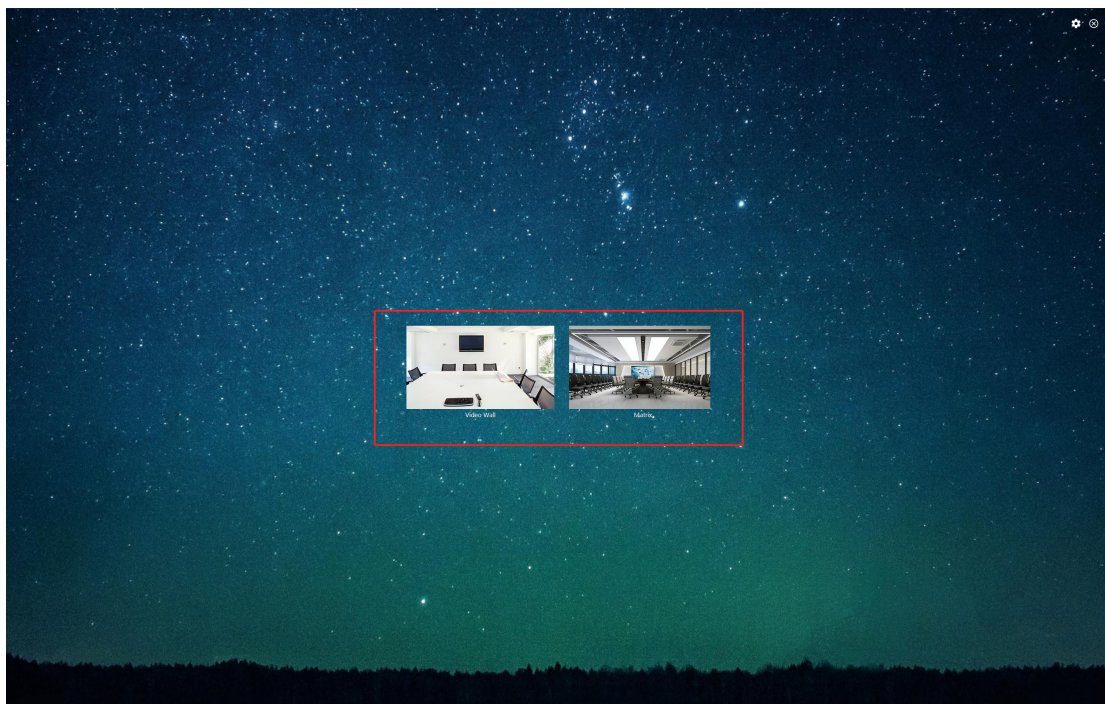
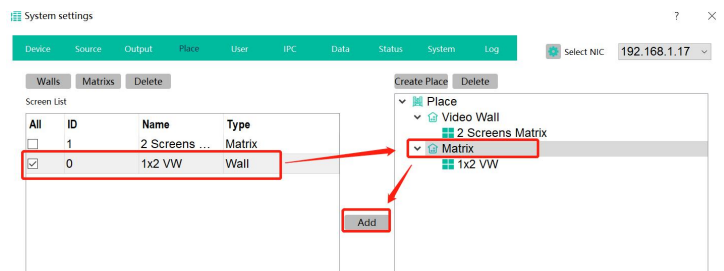
Matrix create and bind the receivers:



Then create places, here created 2 examples:



Select the screen list and add to the places:



User tab is for change password or adding users with different rights:

System settings

Device Source Output Place User IPC Data Status System Log Select NIC 192.168.1.17

Users

ID	Account	Password	Permission
0	admin	123456	Administrator
1	Rocky	123456	User

Username:

Password:

Permission:

Add User Delete User Modify User

Permission Management

Source And Group

- Source Group
 - DELL
 - Desktop

Places

- Place
 - Video Wall
 - 2 Screens Matrix
 - Matrix
 - 1x2 VW

Maximize Exit

IPC for adding the IP cameras which are in the LAN:

System settings

Device Source Output Place User IPC Data Status System Log Select NIC 192.168.1.17

Search Clear Match Password Match Authentication Add Rtsp Add Match Import Add Group Delete Move Up Move Down Rename

All	No.	IP	Userr:	Passw	Address	Main stream

Add

> Source Group

Maximize Exit

Data is for opening server to accept the Designer project uploading or uploading the data or configuration to the other control devices.

Device Source Output Place User IPC Data Status System Log Select NIC 192.168.1.17

Download Management

Local IP: 192.168.1.17

Transmission Information

listen to 8861 success. waiting for uploading

Close Server

Upload Management

Remote IP:

Transmission Information

Upload Data load Configurati

Maximize Exit

Status for the showing the devices status:

ID	IP	Device Name	Device T	Status	Sent	Received	CPU	Memory
2	192.168.1.4	DELL	Input	Online	1.33 Mbps	34.00 Kbps	20.00%	total:256.44 MB, used:50.64 MB
6	192.168.1.5	Desktop	Input	Online	1.24 Mbps	28.00 Kbps	14.53%	total:256.44 MB, used:49.91 MB
1	192.168.1.9	192.168.1.9	Output	Online	47.00 Kbps	1.00 Kbps	2.20%	total:256.44 MB, used:35.81 MB
3	192.168.1.6	192.168.1.6	Output	Online	0.00 Kbps	2.00 Kbps	5.71%	total:256.44 MB, used:36.03 MB
4	192.168.1.7	192.168.1.7	Output	Online	0.00 Kbps	47.00 Kbps	3.25%	total:256.44 MB, used:36.39 MB
5	192.168.1.8	192.168.1.8	Output	Online	0.00 Kbps	2.00 Kbps	6.66%	total:256.44 MB, used:36.02 MB

Enter System to start control the video wall or matrix switchers:

